



a project by **solidere**

مركز بيروت للمعارض
beirut exhibition center

MISSION STATEMENT

Beirut Exhibition Center's mission is to promote and develop greater recognition and appreciation of contemporary art throughout Beirut and the region.

Beirut Exhibition Center is a non-profit space that provides a collaborative environment for art museums commercial galleries or artists collective and cultural organizations. Exhibitions are drawn from artists projects created on site, galleries collaborations, travelling museums shows and a full calendar of public programs.

The B.E.C venue represents one of the most important, challenging and exceptional art spaces in Beirut and is committed to engaging the public in Lebanon and across the region, and contributing in establishing the capital as a sustainable artistic and cultural resource.



THE BUILDING

Location and Architecture

Within its objective to turn the Waterfront District into a major destination, the Beirut Exhibition Center (formally the Exhibition Hall at the Planet Discovery building on Omar Al Daouk Street) inaugurated its new 1,200 sp m exhibition space.

The relocation of the Beirut Exhibition Center prompted architects Makram El-Kadi and Ziad Jamaledine from L.E.F.T. to adapt the building for contemporary exhibitions.

The prefabricated structure was reconfigured on the interior, and given a contemporary customized skin of corrugated anodized mirror aluminum. The resulting building is simultaneously evocative of the infrastructural poche of the building turned inside-out and the developments happening around it. The mirror facades allow the Beirut Exhibition Center to act as a scale reflecting the continuously changing landscape in the waterfront district.

A landscape garden and an outdoor cafe are annexed to the Beirut Exhibition Center which stands as the pioneer public space on the New Waterfront district.

The New Waterfront District is a prime, active, multiuse district with financial, business, residential, tourist and leisure facilities and extensive green areas and bold architecture commanding fine views of the sea and the Lebanese mountains.

When fully completed, it will contain two marinas, a waterside city park, Corniche and quayside promenades, with 29 ha of new waterside development land.



EXHIBITIONS

2010

PERPETUAL ENERGY

The inaugural exhibition at the Beirut Exhibition Center “Nabil Nahas : Perpetual Energy”, curated by eminent American art critic Vincent Katz, is the first retrospective to examine the entire career of painter Nabil Nahas (born Beirut, 1949,lives in Beirut and New York).



ARABICITY

“Arabicity” – an exhibition of nine contemporary artists from the Arab world – is the first collaboration between Rose Issa Projects in London and Beirut Exhibition Centre.



SALON D’AUTOMNE

Musee Sursock

The annual “Salon D’Automne” of Sursock Museum presented the 118 pieces realized by 98 artists and selected by the jury after 4 rounds of selection.



EXHIBITIONS

2011

PARCOURS

This exhibition was a retrospective of Samir Khaddaje's work. He is a great Lebanese painter who lived in Paris after Lebanese civil war. His first individual representation of war, after years of silence, came out as strident bursts of shrapnel.



ZENDEGI

'Zendegi' in Persian means Life. This first major group show of twelve contemporary Iranian artists in Beirut, sheds light on life and art in Iran as seen through the eyes of several of its most prominent and emerging artists.



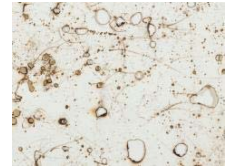
REBIRTH

"Rebirth: Lebanon XXIst Century Contemporary Art". The exhibition features 49 Lebanese artists of all ages, half of them women, living in Lebanon or abroad. They responded with great enthusiasm to the invitation of creating a new work or submit a recent one around the theme of Rebirth.



BURNING

Jean Boghossian featured his recent works on paper and canvas. They all bear at different degrees, traces of burnt degradation.



SALOUA RAOUDA CHOUCAIR

Saloua Raouda Choucair: The Retrospective features the artist's major artwork that was produced over the span of seven rich decades. The show includes pieces that have never been seen before.



ART IN IRAQ TODAY

Art in Iraq Today brings together the works of a group of Iraqi artists with varying working methodologies, whom are united in their experience of exile.



EXHIBITIONS

2012

HOW SOON IS NOW: A TRIBUTE TO DREAMERS

How Soon is Now: A Tribute to Dreamers, the first solo exhibition of Joana Hadjithomas and Khalil Joreige in Beirut. While not a retrospective, the show includes projects from 1997 to 2012 that underscore the artists' ongoing research on the image and representation of the present.



SHAFIC ABOUD

Shafic Abboud (1926-2004) is one of the major figures of Lebanese and Arab contemporary art of the second half of the XXth century.



And more upcoming exhibitions:

GLASSTRESS 2011 – Collective at the 54th Venice Biennale

ANGELIKA VON SCHWEDES

GREAT LEBANESE ARTISTS

HUGUETTE CALAND

CHAWKI CHAMOUN

MARWAN KASSAB-BACHI

ANA CORBERO